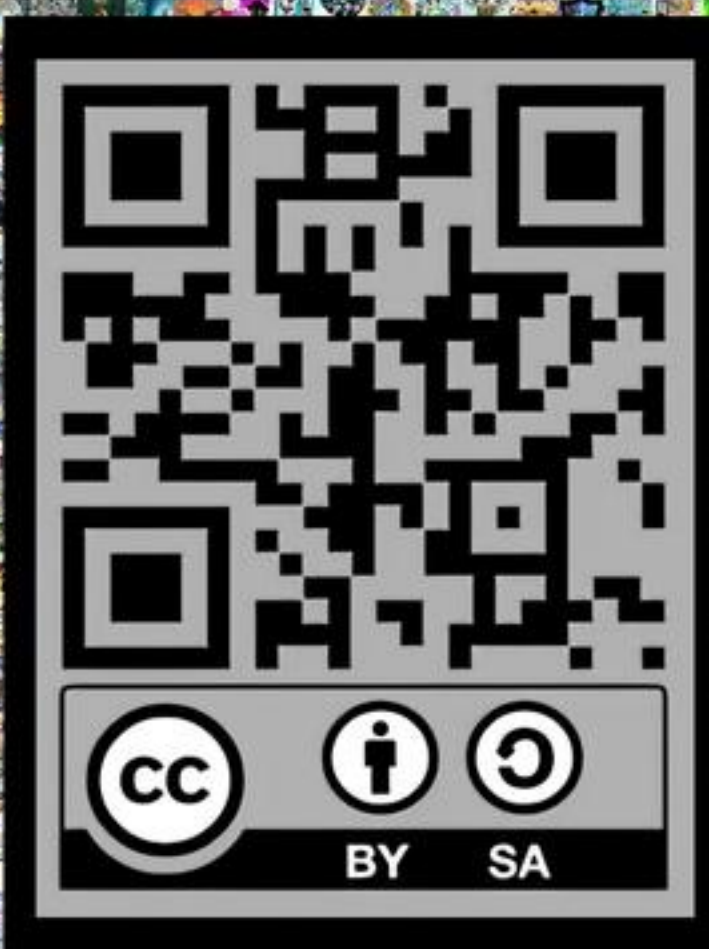


SCHOLARLY STANZAS





Minimal Effects Hypothesis

The Minimal Effects Hypothesis is a theory in the field of communication studies that suggests that the media has limited influence on individuals' attitudes and behaviors. According to this hypothesis, individuals already hold their own beliefs and values, and exposure to media messages only reinforces those pre-existing attitudes, rather than changing them significantly. Thus, the media is seen as having a minimal impact on people's opinions and that other factors, such as personal history and interpersonal communication, have a stronger influence.



Verse 1

Small details, we tend to miss
Minor changes, we dismiss
Unaware of the impact they hold
Significance often remains untold



Verse 2

Subtle cues that go unnoticed
Influence less than we've supposed
Unobservable, yet still exist
Lack of awareness leads to missed



Chorus

Small effects, but they're present
In ways we hardly could sense
Unseen forces, they still persist
The impact, we can't resist



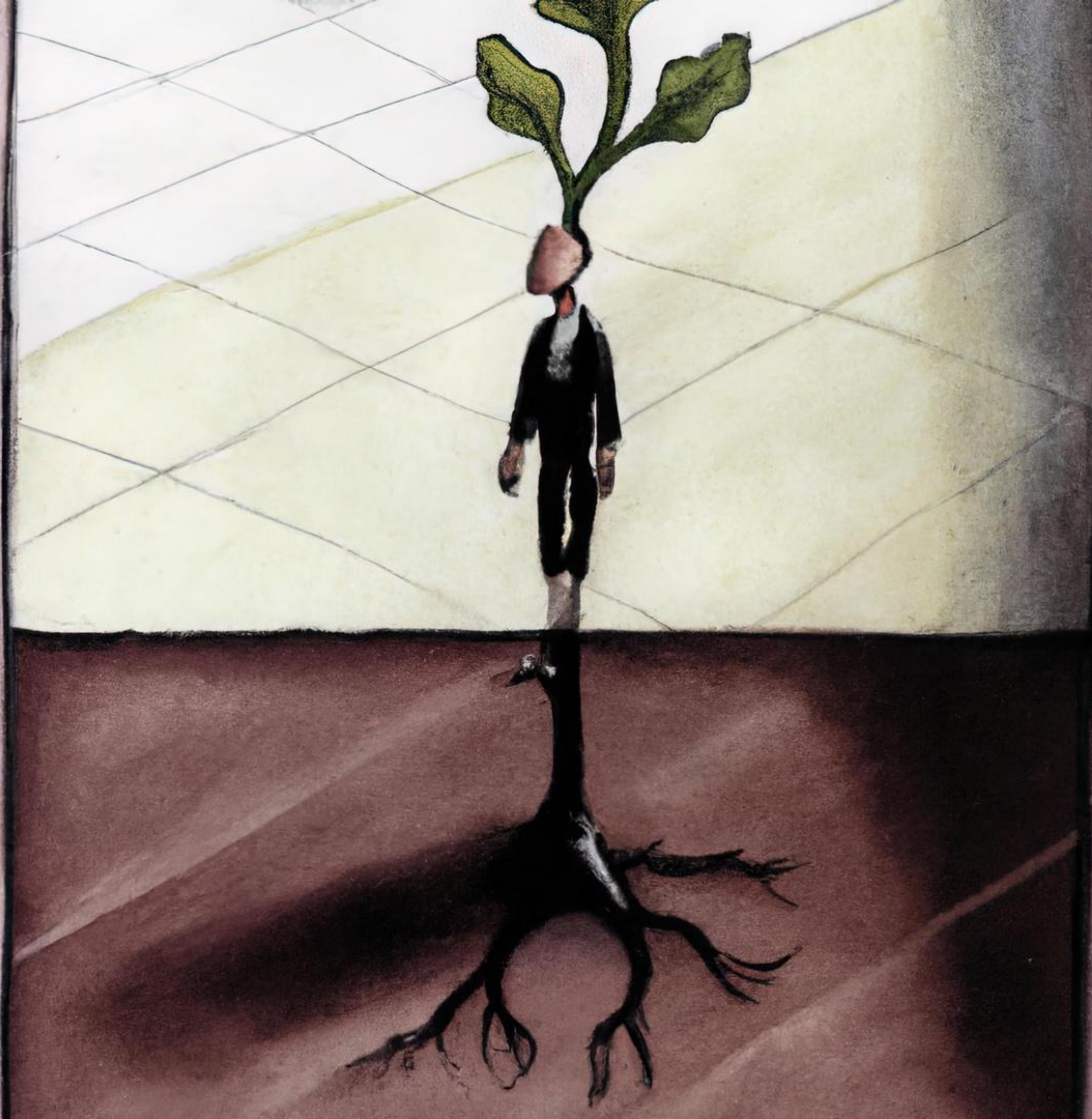
Verse 3

Changes we don't perceive
Low-key stimuli we receive
Still affect our thoughts and ways
Invisible, but they do amaze



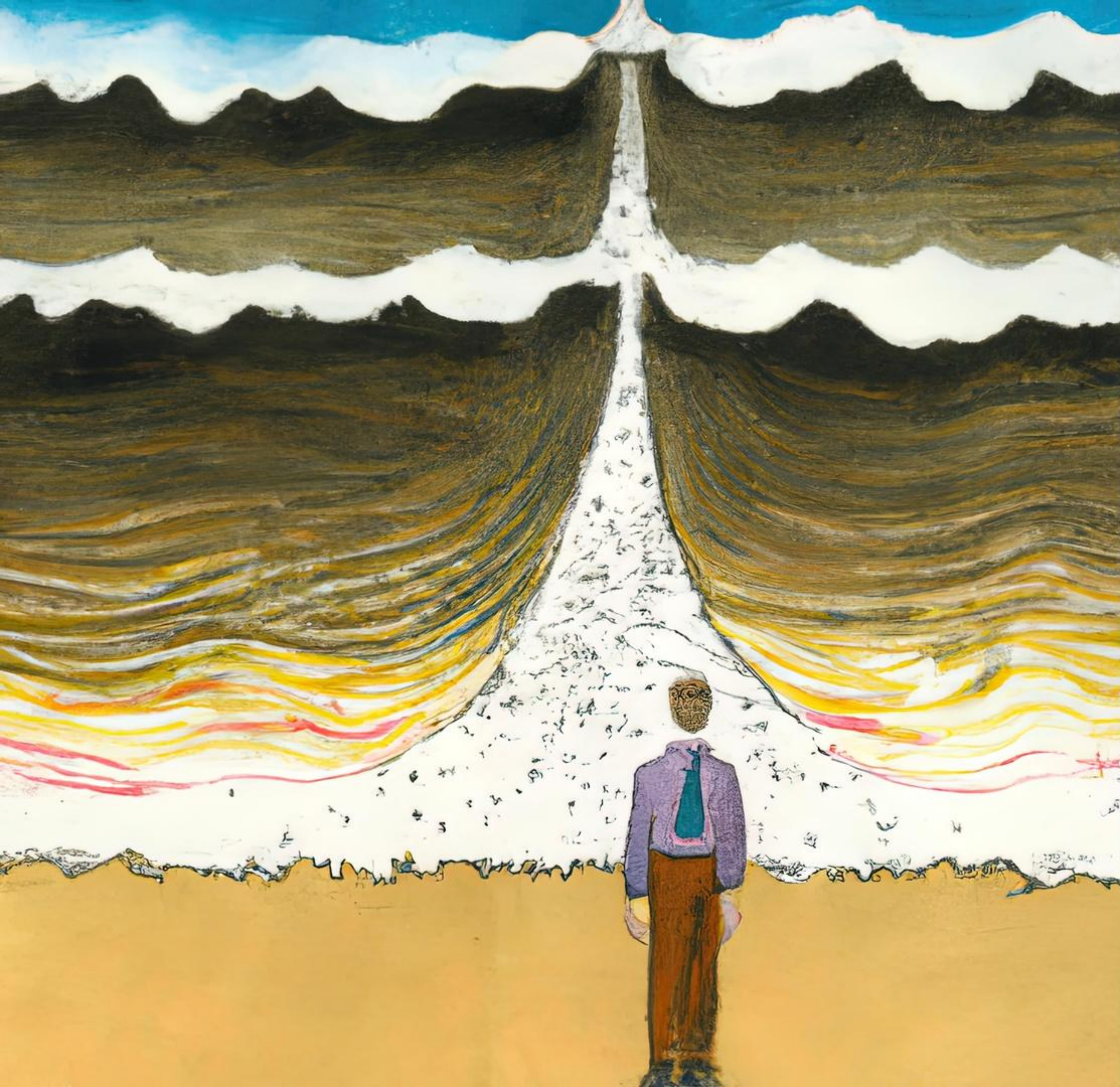
Chorus

Small effects, but they're present
In ways we hardly could sense
Unseen forces, they still persist
The impact, we can't resist



Verse 5

Minor alterations in the background
In our minds, still around
We fail to notice a change of course
Little changes, impacting our source



Verse 6

Influence present in subtle ways
Unnoticed, yet it stays
A slight nudge to alter perception
Tiny shifts lead to a new direction



Chorus

Small effects, but they're present
In ways we hardly could sense
Unseen forces, they still persist
The impact, we can't resist



Verse 7

Small effects magnify in time
Actions that appear benign
Still count when they accumulate
Subtle shifts, always motivate



Verse 8

Little things matter in the end
Fluctuations that seldom bend
Too small to be most accountable
Gaining pace, the immeasurable